

MAZDA CX-9

ZOOM-ZOOM



CONTENTS

03 – Introduction	12 – Sport
04 – Exterior Design	13 – Touring
05 – Interior Design	14 – GT
06 – Interior Space	15 – GT SP
07 – Trims and Craftsmanship	16 – Azami
08 – Colours	17 – Azami LE
09 – Performance	18 – Specifications
10 – Connectivity	28 – Mazda Care
11 – Safety	29 – Contact





FAMILY LUXURY EVOLVED

Mazda CX-9 delivers an exceptional experience for everyone on board with superb design evident everywhere you turn. The spacious interior is finished with quality craftsmanship which is matched by outstanding safety and the latest in driving technology. A range of new and updated features means Mazda CX-9 is a finely crafted luxury and family SUV in one.

The elegant styling of Mazda CX-9 redefines the family SUV. In six or seven-seat configurations, the exterior lines command a striking street presence and look stunning from every angle. New 20" alloys, front grille and larger exhaust tailpipes add even more boldness.

DESIGN, REDEFINED





REFINEMENT AT EVERY TURN

Mazda CX-9 offers unprecedented comfort, technology and spaciousness. Every element of the cabin features exceptional design and superb craftsmanship. To add even more luxury, GT grade and above feature front-row heated seats and heated outer second-row seats, while in Azami grade and above, the front-row enjoys ventilated seats and a heated steering wheel. In Azami LE grade, the second-row now comes with two Captain's Seats featuring power adjust, a centre console and ventilated seats.



Azami in Machine Grey Metallic.

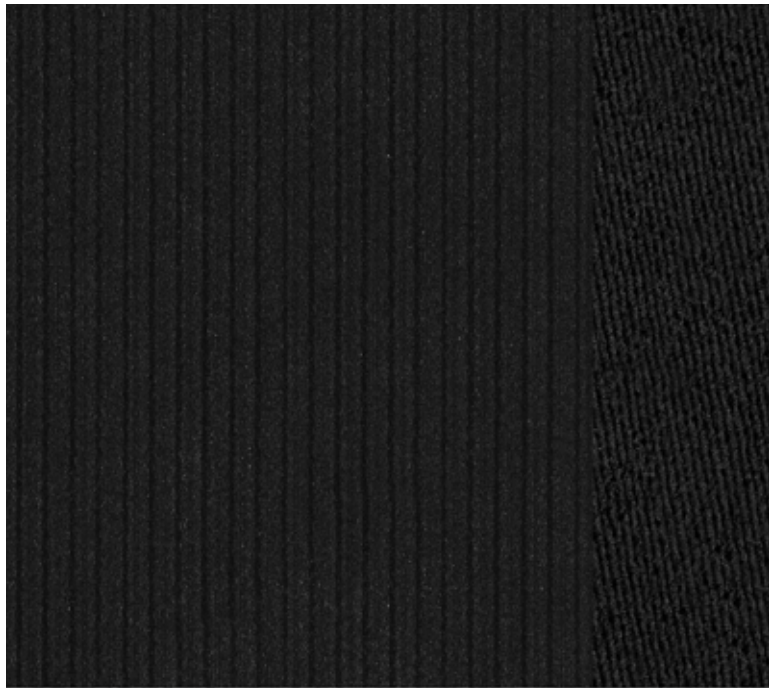


THE ULTIMATE IN SPACE AND FUNCTION

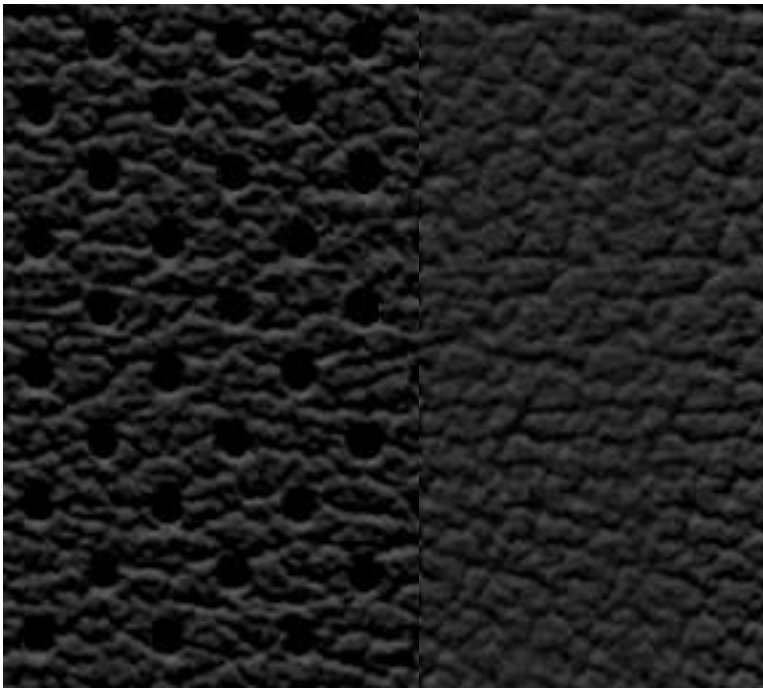
Mazda CX-9 effortlessly accommodates the daily demands of the modern family with a versatile cabin that adapts to all seating and luggage requirements. The third-row is accessed using a simple, one touch walk-in switch, while added storage space is integrated throughout the cabin, as are USB ports. The rear power tailgate with hands-free function adds even more convenience.

INTERIOR TRIMS AND CRAFTSMANSHIP

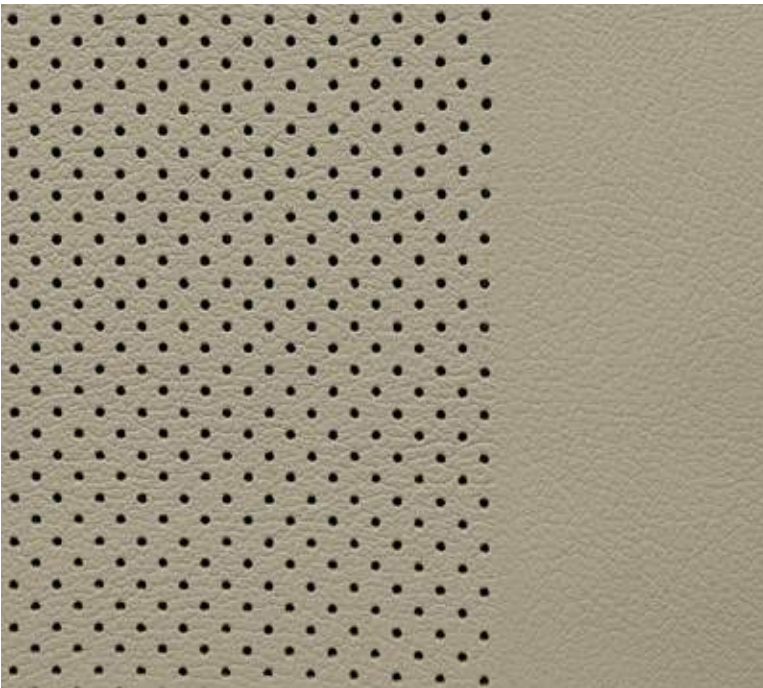
You have a choice of trims in Mazda CX-9, all perfectly complementing the high quality craftsmanship and premium finishes, including wooden accents throughout.



Black cloth (Sport)



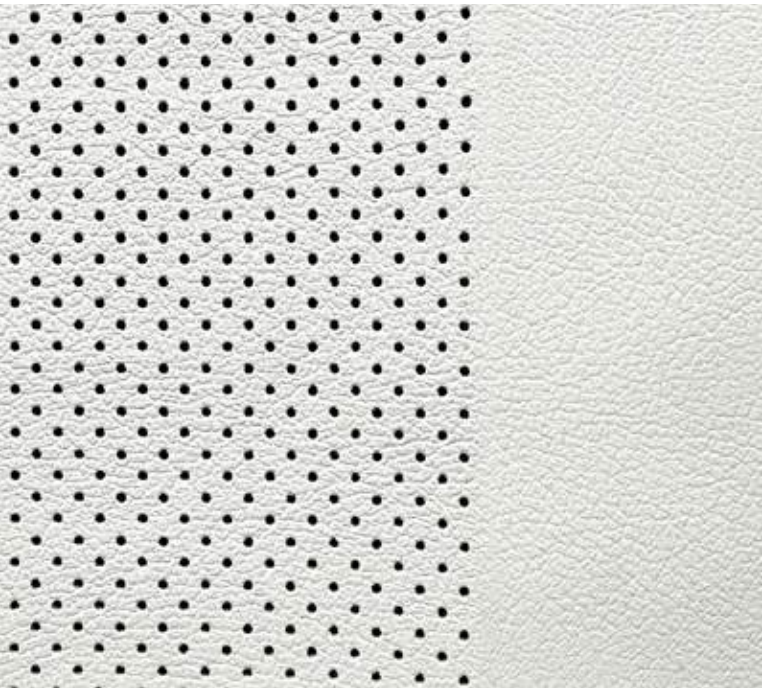
Black leather# (Touring, GT)



Natural Stone leather# (GT)●



Burgundy leather# (GT SP)■



Pure White nappa leather#
(Azami and Azami LE)



Walnut Brown nappa leather#
(Azami and Azami LE)

■ Burgundy leather interior only available with Snowflake White Pearl Mica, Jet Black Mica, Deep Crystal Blue Mica, Sonic Silver Metallic, Machine Grey Metallic and Polymetal Grey Metallic exterior colours.

● Natural Stone leather interior only available with Soul Red Crystal Metallic, Machine Grey Metallic, Titanium Flash Mica, Deep Crystal Blue Mica, Jet Black Mica and Polymetal Grey Metallic exterior colours.

Leather interior includes some Maztex material on selected high-impact surfaces.



Snowflake White Pearl Mica ■



Sonic Silver Metallic ■



Soul Red Crystal Metallic^●



Machine Grey Metallic^■●

STUNNING IN EVERY COLOUR

Take your pick from the range of colours – all beautifully matched to the bold exterior lines of Mazda CX-9.



Titanium Flash Mica ●



Deep Crystal Blue Mica ■●



Jet Black Mica ■●



Polymetal Grey Metallic^■●

■ Burgundy leather interior only available with Snowflake White Pearl Mica, Jet Black Mica, Deep Crystal Blue Mica, Sonic Silver Metallic, Machine Grey Metallic and Polymetal Grey Metallic exterior colours.
● Natural Stone leather interior only available with Soul Red Crystal Metallic, Machine Grey Metallic, Titanium Flash Mica, Deep Crystal Blue Mica, Jet Black Mica and Polymetal Grey Metallic exterior colours.
^ At extra cost.



BREAKTHROUGH FAMILY SUV PERFORMANCE

Mazda CX-9 features the breakthrough Skyactiv-G 2.5T petrol engine. This 2.5-litre direct injection turbocharged engine delivers an athletic driving performance with real-world efficiency that's previously unheard of in a family SUV.

COMPATIBLE CONNECTIVITY

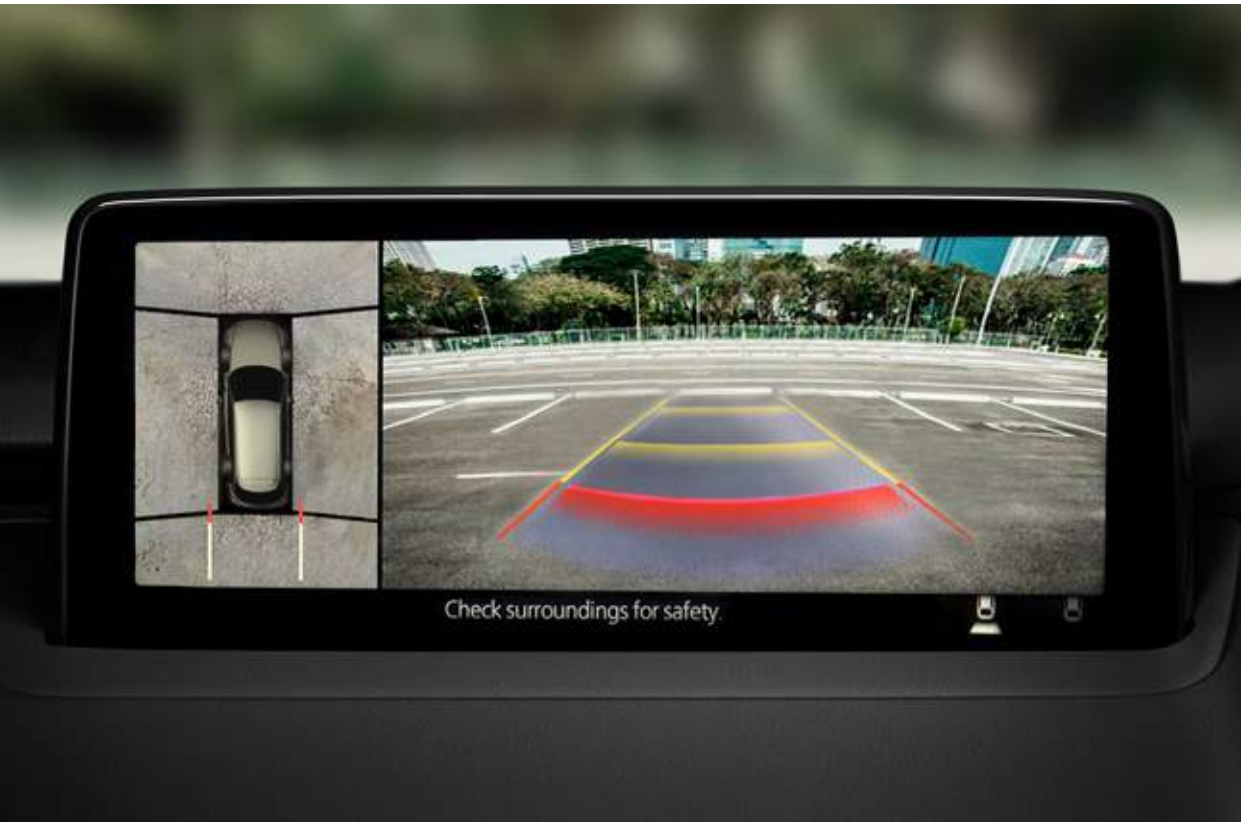
Mazda CX-9 is fully-equipped to handle the entertainment demands of modern families. USB ports are distributed throughout the cabin. Up front, wireless phone charging[‡] is available on GT grade and above while Apple CarPlay[®] and Android[™] Auto[§], are standard on every grade, allowing you to access your compatible smartphone via the stunning screen, which is a 10.25" widescreen display on GT grade and above[§]



§ Please check the compatibility of your Bluetooth[®] device (particularly your mobile phone) with the specific Mazda vehicle you intend to purchase as not all devices operate correctly. Visit www.mazda.com.au/Bluetooth or consult your Mazda Dealer for further information.
Apple Car Play[®] is a trademark of Apple Inc., registered in the U.S. and other countries.
‡ Wireless charging compatible with phones featuring Qi technology or adapter.

ADVANCED SAFETY LOOKS OUT FOR YOU

Your family’s safety is always a priority. Mazda CX-9 comes equipped with a suite of i-Activsense advanced safety technologies as standard, assisting the driver to avoid potential hazards† Along with preventative features, crash-severity-reduction technology is activated in the event of unavoidable impact.



† Driver assist technology only and should not be used in place of skilled and safe driving practices. It is the driver’s sole responsibility to monitor vehicle surroundings and conditions and comply with all applicable laws at all times.



MAZDA CX-9 SPORT FEATURES

- » 18 inch alloy wheels with 255/60 tyres
- » Headlamps (LED) with auto on/off function
- » Wipers (front) 2-speed with rain sensing function
- » Power mirrors (body coloured with heating and auto-folding function)
- » Active driving display
- » Air-conditioning (three-zone climate control) with independent rear control
- » Rear-view mirror with auto-dimming function
- » Seat trim: Black cloth
- » 7-inch touch screen display (MZD Connect)
- » Audio system with: AM/FM tuner, Bluetooth® capability, Digital radio (DAB+) and 6 speakers[§]
- » Apple Carplay® and Android™ Auto[§]
- » Advanced keyless push button engine start
- » Blind Spot Monitoring (BSM)[†]
- » Driver Attention Alert (DAA)[†]
- » High Beam Control (HBC)[†]
- » Lane Departure Warning (LDW)[†]
- » Lane-keep Assist System (LAS)[†]
- » Mazda Radar Cruise Control (MRCC) with Stop & Go function[†]
- » Multi-function commandor control
- » Parking sensors (Rear)[†]
- » Rear Cross Traffic Alert (RCTA)[†]
- » Reverse camera
- » Satellite navigation
- » Smart Brake Support (SBS)[†]
- » Smart City Brake Support [Forward/Reverse] (SCBSF/R)[†] with night time pedestrian detection
- » Traffic Sign Recognition (TSR)[†]
- » Tyre Pressure Monitoring System (TPMS)[†]
- » Electric parking brake with Auto Hold
- » GVC Plus
- » Off road traction assist (only on AWD)

POWERTRAIN

- » 2.5 litre in-line 4 cylinder 16 valve DOHC S-VT turbo petrol engine with i-stop and i-ELOOP
- » Drivetrain: FWD or i-Activ AWD
- » Fuel consumption (combined): 8.4L/100km* (FWD) or 9.0L/100km* (AWD)
- » Maximum power: 170kW @ 5,000rpm
- » Maximum torque: 420Nm @ 2,000rpm
- » Transmission: 6-speed auto (Skyactiv-Drive)
- » G-Vectoring Control Plus (GVC Plus)

[§] Please check the compatibility of your Bluetooth® device (particularly your mobile phone) with the specific Mazda vehicle you intend to purchase as not all devices operate correctly. Visit www.mazda.com.au/Bluetooth or consult your Mazda Dealer for further information. Apple Car Play® is a trademark of Apple Inc., registered in the U.S. and other countries. [†] Driver assist technology only and should not be used in place of skilled and safe driving practices. It is the driver's sole responsibility to monitor vehicle surroundings and conditions and comply with all applicable laws at all times. *Fuel consumption figures are based on ADR 81/02 test results. They are useful in comparing the fuel consumption of different vehicles. They may not be the fuel consumption achieved in practice. This will depend on traffic and road conditions and how the vehicle is driven.

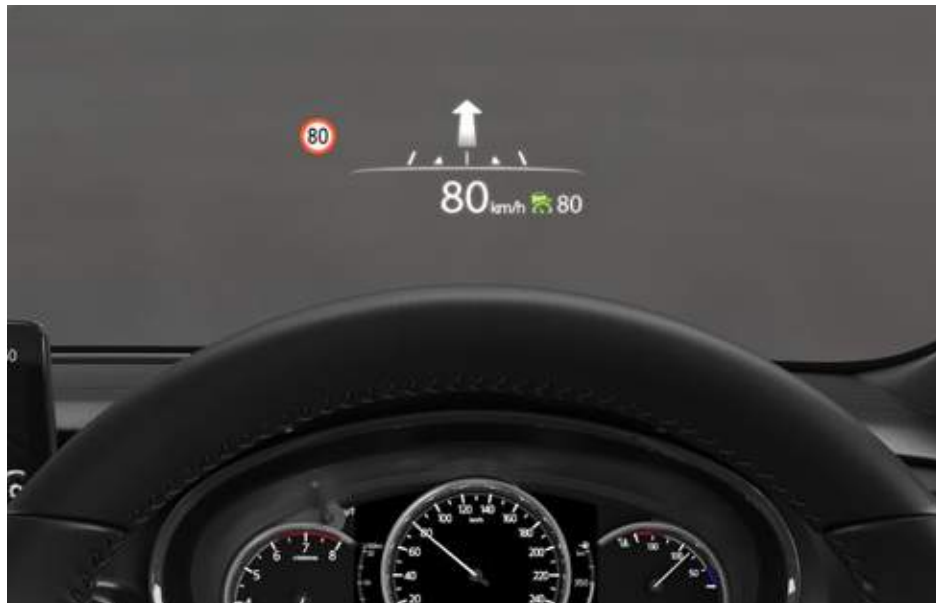


MAZDA CX-9 TOURING FEATURES – ADDITIONAL TO SPORT

- » LED fog lamps
- » Parking sensors (front)
- » Seat trim: Black leather[#]
- » Front seats with: 6-way power adjustment (passenger), 8-way power adjustment (driver) and heating function
- » Rear seats with: Centre armrest storage and USB input ports (2nd row)
- » One touch walk-in switch (2nd row seat)
- » 9-inch touch screen display (MZD Connect)
- » Advanced keyless entry
- » Paddle shift gear control

POWERTRAIN

- » 2.5 litre in-line 4 cylinder 16 valve DOHC S-VT turbo petrol engine with i-stop and i-ELOOP
- » Drivetrain: FWD or i-Activ AWD
- » Fuel consumption (combined): 8.4L/100km* (FWD) or 9.0L/100km* (AWD)
- » Maximum power: 170kW @ 5,000rpm
- » Maximum torque: 420Nm @ 2,000rpm
- » Transmission: 6-speed auto (Skyactiv-Drive)
- » G-Vectoring Control Plus (GVC Plus)



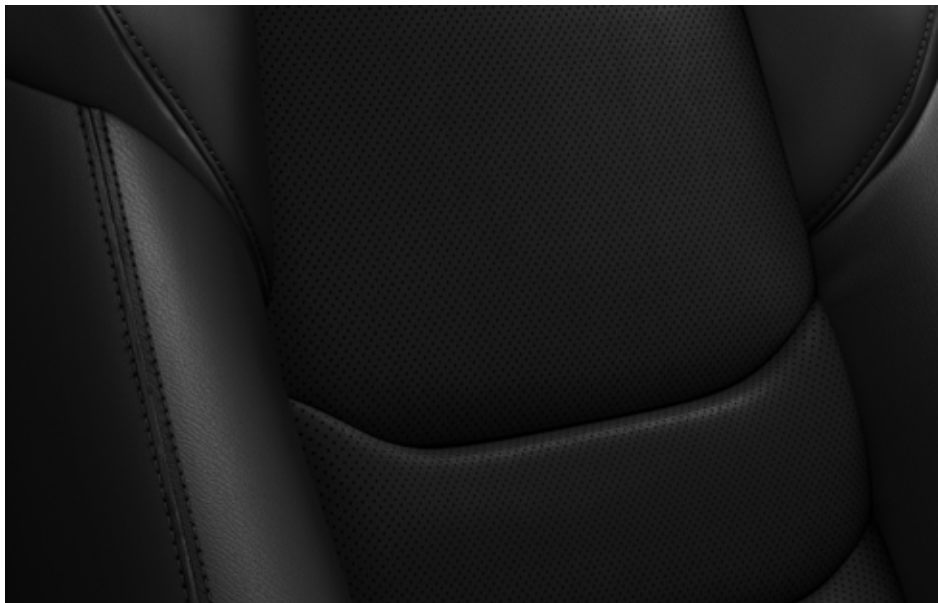
HEADS UP

With Active Driving Display, key information is projected in full-colour onto your windscreen directly in your line of sight. Includes Traffic Sign Recognition to keep you on track.



ONE TOUCH

Getting in and out of the third row is now easier than ever, thanks to the one touch walk-in switch.



BACK IN BLACK

From back to front, everyone can enjoy the feeling of luxurious black leather[#] seats.

*Fuel consumption figures are based on ADR 81/02 test results. They are useful in comparing the fuel consumption of different vehicles. They may not be the fuel consumption achieved in practice. This will depend on traffic and road conditions and how the vehicle is driven. [#]Leather interior includes some Maztex material on selected high impact surfaces.



MAZDA CX-9 GT FEATURES – ADDITIONAL TO TOURING

- » 20-inch alloy wheels with 255/50 tyres
- » Power sliding and tilt-glass sunroof
- » Exterior garnish (Bright)
- » Seat trim: Black or Natural stone leather[#]
- » Front seats with 2-position memory function (driver), and 10-way power adjustment (driver)
- » Rear seats with: Heating function (2nd row outer) and USB charging ports (3rd row)
- » Rear door window sunshade
- » 10.25-inch widescreen display (Mazda Connect)
- » Wireless charger[‡]
- » Premium Bose® 294-watt amplifier and 12 speakers (including subwoofer)
- » Remote operated and hands-free power tailgate (open/close)

POWERTRAIN

- » 2.5 litre in-line 4 cylinder 16 valve DOHC S-VT turbo petrol engine with i-stop and i-ELOOP
- » Fuel consumption (combined): 8.4L/100km* (FWD) or 9.0L/100km* (AWD)
- » Maximum power: 170kW @ 5,000rpm
- » Drivetrain: FWD or i-Activ AWD
- » Maximum torque: 420Nm @ 2,000rpm
- » Transmission: 6-speed auto (Skyactiv-Drive)
- » G-Vectoring Control Plus (GVC Plus)



SOUNDS AMAZING

The 12-speaker Bose® audio system has been strategically placed around the spacious cabin to ensure you enjoy studio quality audio from any seat.



HANDS-FREE TAILGATE

Now you can open your boot even when your hands are full, by simply swiping your foot under the tailgate.



LET THERE BE LIGHT

Light up the stunning interior and let fresh air in too with the retractable glass sunroof.

*Fuel consumption figures are based on ADR 81/02 test results. They are useful in comparing the fuel consumption of different vehicles. They may not be the fuel consumption achieved in practice. This will depend on traffic and road conditions and how the vehicle is driven. [#]Leather interior includes some Maztex material on selected high impact surfaces. [‡]Wireless charging compatible with phones featuring Qi technology or adapter.



MAZDA CX-9 GT SP FEATURES – ADDITIONAL TO GT

- » 20-inch alloy wheels with 255/50 tyres (Black)
- » Grille (Black)
- » Outer mirror (Black)
- » Burgundy leather# seats
- » Red interior stitch
- » Instrument panel (Black)

POWERTRAIN

- » 2.5 litre in-line 4 cylinder 16 valve DOHC S-VT turbo petrol engine with i-stop and i-ELOOP
- » Fuel consumption (combined): 8.4L/100km* (FWD) or 9.0L/100km* (AWD)
- » Maximum torque: 420Nm @ 2,000rpm
- » Drivetrain: FWD or i-Activ AWD
- » Maximum power: 170kW @ 5,000rpm
- » Transmission: 6-speed auto (Skyactiv-Drive)
- » G-Vectoring Control Plus (GVC Plus)



A BOLD FACE
The bold new black painted grille gives Mazda CX-9 a strong and unmistakeable stance.



DARK AND HANDSOME
The black 20-inch alloy wheels are a standout, designed to turn heads wherever you go.



A TOUCH OF METAL
Every detail has been considered with burgundy leather# and metallic black interior decoration panels a highlight.

*Fuel consumption figures are based on ADR 81/02 test results. They are useful in comparing the fuel consumption of different vehicles. They may not be the fuel consumption achieved in practice. This will depend on traffic and road conditions and how the vehicle is driven. #Leather interior includes some Maztex material on selected high impact surfaces.



MAZDA CX-9 AZAMI FEATURES – ADDITIONAL TO GT SP

- » 20-inch alloy wheels with 255/50 tyres (Bright)
- » Titanium grey metallic front grille
- » Adaptive LED Headlamps (ALH)
- » Large diameter tailpipe
- » Seat trim: Walnut brown or Pure white nappa leather[#] with quilting
- » Front seats with ventilation function
- » Instrument panel (Geometry pattern)
- » Unique overhead console
- » Centre console ambient lighting (LED)
- » Real wood decoration panels
- » 7-inch TFT LCD multi-information meter display
- » Heated steering wheel
- » Hand-crafted box stitch steering wheel
- » 360° View Monitor[†]
- » Frameless rear-view mirror

POWERTRAIN

- » 2.5 litre in-line 4 cylinder 16 valve DOHC S-VT turbo petrol engine with i-stop and i-ELOOP
- » Drivetrain: FWD or i-Activ AWD
- » Fuel consumption (combined): 8.4L/100km* (FWD) or 9.0L/100km* (AWD)
- » Maximum power: 170kW @ 5,000rpm
- » Maximum torque: 420Nm @ 2,000rpm
- » Transmission: 6-speed auto (Skyactiv-Drive)
- » G-Vectoring Control Plus (GVC Plus)



FEEL THE WARMTH

Wrap your hands around the heated steering wheel and feel a level of luxury you'll never be able to live without.



QUALITY FINISHES

From the real wood decoration panels to the hand-crafted box stitch steering wheel, quality is everywhere you look.



RIDE IN COMFORT

The front ventilated seats ensure every drive is a comfortable one by drawing warm air away from the driver and front passenger.

*Fuel consumption figures are based on ADR 81/02 test results. They are useful in comparing the fuel consumption of different vehicles. They may not be the fuel consumption achieved in practice. This will depend on traffic and road conditions and how the vehicle is driven. [#]Leather interior includes some Maztex material on selected high impact surfaces. [†]Driver assist technology only and should not be used in place of skilled and safe driving practices. It is the driver's sole responsibility to monitor vehicle surroundings and conditions and comply with all applicable laws at all times.



MAZDA CX-9 AZAMI LE FEATURES – ADDITIONAL TO AZAMI

- » 2nd row Captain’s Seats with power adjust and ventilation function
- » 2nd row centre console with cup holder

POWERTRAIN

- » 2.5 litre in-line 4 cylinder 16 valve DOHC S-VT turbo petrol engine with i-stop and i-ELOOP
- » Drivetrain: i-Activ AWD
- » Fuel consumption (combined): 9.0L/100km* (AWD)
- » Maximum power: 170kW @ 5,000rpm
- » Maximum torque: 420Nm @ 2,000rpm
- » Transmission: 6-speed auto (Skyactiv-Drive)
- » G-Vectoring Control Plus (GVC Plus)



SECOND ROW FIRST CLASS

The second-row Captain’s Seats come with power adjust and a ventilation function for extra comfort.



NEXT-GEN CONNECTIVITY

The new, highly intuitive Mazda Connect System keeps your world close and easy to manage.



CHARGE THE EASY WAY‡

The new wireless charge function keeps a connected device charged automatically.

*Fuel consumption figures are based on ADR 81/02 test results. They are useful in comparing the fuel consumption of different vehicles. They may not be the fuel consumption achieved in practice. This will depend on traffic and road conditions and how the vehicle is driven.

‡ Wireless charging compatible with phones featuring Qi technology or adapter.

SPECIFICATIONS

Powertrain		2.5L Turbo I4 Petrol FWD	2.5L Turbo I4 Petrol AWD
Bore and stroke (mm)		89.0 x 100.0	
Compression ratio		10.5: 1	
Drivetrain		i-Activ FWD	i-Activ AWD
Emissions standard		Euro stage V	
Engine capacity (cc)		2,488	
Engine type		2.5 litre in-line 4 cylinder 16 valve DOHC S-VT turbo petrol (Skyactiv-G) engine	
Fuel consumption (l/100km)*:	Auto (combined)	8.4	9.0
	Auto (extra urban)	6.9	7.5
	Auto (urban)	11.0	11.7
CO ₂ Emissions (g/km)*	combined	197	211
Fuel system		Electronic direct injection	
Fuel tank capacity (litres)		72	74
Gear ratio – Auto:	1st	3.487	
	2nd	1.992	
	3rd	1.449	
	4th	1.000	
	5th	0.707	
	6th	0.600	
	Reverse	3.990	
	Final drive	4.411	
Maximum power (kW @ rpm)		170 @ 5,000	
Maximum torque (Nm @ rpm)		420 @ 2,000	
Recommended fuel		Unleaded (91RON or higher) or E10	
Throttle control		Electronic (drive-by-wire)	
Transmission:	Auto	6-speed Skyactiv-Drive	

* Fuel consumption and CO₂ figures are based on ADR 81/02 test results. They are useful in comparing the fuel consumption of different vehicles. They may not be the fuel consumption and emissions achieved in practice. This will depend on traffic and road conditions and how the vehicle is driven.

SPECIFICATIONS

Model Availability		Sport	Touring	GT	GT SP	Azami	Azami LE
7-seat SUV:	2.5L Turbo I4 Petrol FWD / 6-speed automatic	●	●	●	●	●	—
	2.5L Turbo I4 Petrol AWD / 6-speed automatic	●	●	●	●	●	—
6-seat SUV:	2.5L Turbo I4 Petrol AWD / 6-speed automatic	—	—	—	—	—	●

Weights and Capacities		Sport	Touring	GT	GT SP	Azami	Azami LE
Cargo room volume VDA ² (litres)		----- 230 -----					
Cargo room volume VDA ³ (litres)		----- 810 -----					
Gross Vehicle Mass (GVM) (kg)	2.5L Turbo I4 Petrol FWD / 6-speed automatic	2,505	2,505	2,505	2,505	2,505	—
	2.5L Turbo I4 Petrol AWD / 6-speed automatic	2,575	2,575	2,575	2,575	2,575	2,575
Kerb weight (kg)	2.5L Turbo I4 Petrol FWD / 6-speed automatic	1,882	1,882	1,939	1,939	1,939	—
	2.5L Turbo I4 Petrol AWD / 6-speed automatic	1,954	1,954	2,011	2,011	2,011	2,011
Payload capacity (kg)	2.5L Turbo I4 Petrol FWD / 6-speed automatic	623	623	566	566	566	—
	2.5L Turbo I4 Petrol AWD / 6-speed automatic	621	621	564	564	564	564
Towing capacity [¶] (kg):	Braked	----- 2,000 -----					
	Unbraked	----- 750 -----					
Tow ball download maximum (kg)		----- 150 -----					

● = Standard, — = Not available.

¶ When fitted with a Mazda genuine towing kit. Subject to State and Territory regulations.

2 Measured with rear seats up and up to roof.

3 Measured with third row seats folded down and up to roof.

SPECIFICATIONS

Chassis and Powertrain Technologies	Sport	Touring	GT	GT SP	Azami	Azami LE
Automatic transmission drive selection	●	●	●	●	●	●
Automatic transmission kickdown switch	●	●	●	●	●	●
Dynamic Pressure Turbo system	●	●	●	●	●	●
Electric Parking Brake with Auto Hold	●	●	●	●	●	●
Electric power assist steering	●	●	●	●	●	●
i-Activ AWD with Off-Road Traction Assist	○	○	○	○	○	●
i-ELOOP	●	●	●	●	●	●
i-stop	●	●	●	●	●	●
Paddle shift gear control	—	●	●	●	●	●
Skyactiv-Body	●	●	●	●	●	●
Skyactiv-Chassis	●	●	●	●	●	●
Skyactiv-Vehicle Dynamics G-Vectoring Control Plus (GVC Plus)	●	●	●	●	●	●

● = Standard, ○ = Option,— = Not available.

SPECIFICATIONS

Chassis		Sport		Touring	GT	GT SP	Azami	Azami LE
Brake diameter (mm):	Front	320						
	Rear	325						
Brake type:	Front	Ventilated disc						
	Rear	Solid disc						
Suspension:	Front	MacPherson strut						
	Rear	Multi-link						
Turning circle kerb to kerb (m)		11.8						
Tyre size		255/60 R18	255/60 R18	255/50 R20	255/50 R20	255/50 R20	255/50 R20	
Tyre index		108H	108H	105V	105V	105V	105V	
Wheel size		18 x 8.0 J	18 x 8.0 J	20 x 8.5 J	20 x 8.5 J	20 x 8.5 J	20 x 8.5 J	
Wheel type		Alloy						
Tyre size (spare)		185/80 R17						
Wheel size (spare)		17 x 5.5 J						
Wheel type (spare)		Temporary (steel)						
Dimensions		Sport		Touring	GT	GT SP	Azami	Azami LE
Ground clearance laden (mm)		220						
Ground clearance unladen (mm)		222						
Overall length (mm)		5,075						
Overall width (mm)		1,969						
Overall height (mm)	2.5L Turbo I4 Petrol FWD / 6-speed automatic	1,748	1,748	1,750	1,750	1,750	–	
	2.5L Turbo I4 Petrol AWD / 6-speed automatic	1,747	1,747	1,749	1,749	1,749	1,749	
Track (mm):	Front	1,663						
	Rear	1,663						
Wheelbase (mm)		2,930						

SPECIFICATIONS

Exterior	Sport	Touring	GT	GT SP	Azami	Azami LE
Daytime running lamps (Halogen)	●	●	●	●	—	—
Daytime running lamps (LED)	—	—	—	—	●	●
Door handles (body coloured)	●	●	●	●	●	●
Exhaust extensions (chrome)	●	●	●	●	—	—
Exhaust extensions – Large (chrome)	—	—	—	—	●	●
Front fog-lamps (LED)	—	●	●	●	●	●
Front and rear bumpers (body coloured)	●	●	●	●	●	●
Green-tinted windscreen, side and rear windows	●	●	●	●	●	●
Headlamps (LED)	●	●	●	●	●	●
Headlamps auto on/off function	●	●	●	●	●	●
Power mirrors (with heating and auto folding function)	●	●	●	●	●	●
Power sliding and tilt glass sunroof	—	—	●	●	●	●
Power windows	●	●	●	●	●	●
Rear spoiler	●	●	●	●	●	●
Remote operated and hands free power tailgate (open/close)	—	—	●	●	●	●
Tail-lamps (LED)	●	●	●	●	●	●
Window demister (rear)	●	●	●	●	●	●
Wipers (front) 2-speed with rain-sensing function	●	●	●	●	●	●
Wiper (rear) with intermittent function	●	●	●	●	●	●

● = Standard, — = Not available.

SPECIFICATIONS

Interior		Sport	Touring	GT	GT SP	Azami	Azami LE
7-inch TFT LCD multi-information meter display		—	—	—	—	●	●
Active Driving Display†		●	●	●	●	●	●
Air-conditioning (three-zone climate control) with independent rear control and vents (2nd row)		●	●	●	●	●	●
Ambient temperature display		●	●	●	●	●	●
Cargo area 12 volt power outlet		●	●	●	●	●	●
Centre armrest console		●	●	●	●	●	●
Critical function warning lights/chimes		●	●	●	●	●	●
Cupholders		●	●	●	●	●	●
Door bottle holders (front and rear)		●	●	●	●	●	●
Glove box		●	●	●	●	●	●
Heated steering wheel function		—	—	—	—	●	●
Instrument panel light dimmer		●	●	●	●	●	●
Interior illumination:	Cargo room lamp	●	●	●	●	●	●
	Entry system with delayed fade	●	●	●	●	●	●
	Map reading spot lamps (Incandescent)	●	●	—	—	—	—
	Map reading spot lamps (LED)	—	—	●	●	●	●
	Power window switches	●	●	●	●	●	●
Leather-wrapped:	Gear shift knob	●	●	●	●	●	●
	Steering wheel	●	●	●	●	●	●
Mazda Radar Cruise Control (MRCC)† with Stop & Go function		●	●	●	●	●	●
One touch (up and down) power windows (front and rear)		●	●	●	●	●	●
Overhead sunglass storage box		●	●	●	●	●	●
Rear door window sunshade		—	—	●	●	●	●

● = Standard, — = Not available.

† Driver assist technology only and should not be used in place of skilled and safe driving practices. It is the driver’s sole responsibility to monitor vehicle surroundings and conditions and comply with all applicable laws at all times.

SPECIFICATIONS

Interior	Sport	Touring	GT	GT SP	Azami	Azami LE
Rear-view mirror with auto dimming function	●	●	●	●	●	●
Tachometer and electronic odometer/tripmeter	●	●	●	●	●	●
Tilt and telescopic adjustable steering wheel	●	●	●	●	●	●
Trip computer	●	●	●	●	●	●
Vanity mirrors (front) with illumination	●	●	●	●	●	●

Infotainment	Sport	Touring	GT	GT SP	Azami	Azami LE
7-inch full colour touch screen display (MZD Connect)	●	—	—	—	—	—
9-inch full colour touch screen display (MZD Connect)	—	●	—	—	—	—
10.25-inch widescreen display (Mazda Connect)	—	—	●	●	●	●
AM/FM tuner	●	●	●	●	●	●
Apple Car Play® and Android™ Auto§	●	●	●	●	●	●
Auxiliary-audio input jack (3.5mm mini-stereo)	●	●	—	—	—	—
Bluetooth® hands-free phone and audio capability§	●	●	●	●	●	●
Digital radio (DAB+)	●	●	●	●	●	●
Internet radio integration (Stitcher™ and Aha™)	●	●	●	●	●	●
Multi—function commander control	●	●	●	●	●	●
Premium Bose® 294 watt amplifier and speakers	—	—	●	●	●	●
Radio Data System (RDS) program information	●	●	●	●	●	●
Satellite navigation	●	●	●	●	●	●
Speakers (6)	●	●	—	—	—	—
Speakers (12)	—	—	●	●	●	●
Steering wheel-mounted audio controls	●	●	●	●	●	●
USB-audio input ports (iPod compatible)	●	●	●	●	●	●
Wireless charger‡	—	—	●	●	●	●

● = Standard, — = Not available.

§ Please check the compatibility of your Bluetooth® device (particularly your mobile phone) with the specific Mazda vehicle you intend to purchase as not all devices operate correctly. Visit www.mazda.com.au/Bluetooth or consult your Mazda Dealer for further information. Apple Car Play® is a trademark of Apple Inc., registered in the U.S. and other countries. ‡ Wireless charging compatible with phones featuring Qi technology or adapter.

SPECIFICATIONS

Safety and Security		Sport	Touring	GT	GT SP	Azami	Azami LE
360° View Monitor†		—	—	—	—	●	●
Adaptive LED Headlamps (ALH)†		—	—	—	—	●	●
Blind Spot Monitoring (BSM)†		●	●	●	●	●	●
Advanced keyless entry		—	●	●	●	●	●
Advanced keyless push-button engine start		●	●	●	●	●	●
Airbags SRS:	Front (driver and passenger)	●	●	●	●	●	●
	Side (front)	●	●	●	●	●	●
	Curtain (front and rear)	●	●	●	●	●	●
Anti-lock Braking System (ABS)†		●	●	●	●	●	●
Auto Door Lock (ADL)†		●	●	●	●	●	●
Childproof rear door locks		●	●	●	●	●	●
Child restraint anchorage points:	ISOFIX (x2)	●	●	●	●	●	●
	Top tether (x4)	—	—	—	—	—	●
	Top tether (x5)	●	●	●	●	●	—
Driver Attention Alert (DAA)†		●	●	●	●	●	●
Dynamic Stability Control (DSC)†		●	●	●	●	●	●
Electronic Brake-force Distribution (EBD)†		●	●	●	●	●	●
Emergency Brake Assist (EBA)†		●	●	●	●	●	●
Emergency Stop Signal (ESS)†		●	●	●	●	●	●
Engine immobiliser		●	●	●	●	●	●
Forward Obstruction Warning (FOW)†		●	●	●	●	●	●
High Beam Control (HBC)†		●	●	●	●	—	—
High mount stop lamp		●	●	●	●	●	●
Hill Launch Assist (HLA)†		●	●	●	●	●	●
Intrusion-minimising brake pedal		●	●	●	●	●	●
Lane-keep Assist System (LAS)†		●	●	●	●	●	●

● = Standard, — = Not available.

† Driver assist technology only and should not be used in place of skilled and safe driving practices. It is the driver’s sole responsibility to monitor vehicle surroundings and conditions and comply with all applicable laws at all times.

SPECIFICATIONS

Safety and Security	Sport	Touring	GT	GT SP	Azami	Azami LE
Lane Departure Warning (LDW) [†]	●	●	●	●	●	●
Left-hand-side convex (wide angle) exterior mirror	●	●	●	●	●	●
Parking sensors (front)	—	●	●	●	●	●
Parking sensors (rear)	●	●	●	●	●	●
Rear Cross Traffic Alert (RCTA) [†]	●	●	●	●	●	●
Remote central locking (2 transmitters)	●	●	●	●	●	●
Reverse camera	●	●	●	●	●	●
Roll Stability Control (RSC) [†]	●	●	●	●	●	●
Seat-belt warning (front and rear)	●	●	●	●	●	●
Seat-belts 3-point lap-sash (all seats)	●	●	●	●	●	●
Seat-belts (front) with pretensioners, load-limiters and height adjustable shoulder anchorages	●	●	●	●	●	●
Seat-belts (2nd row) with pretensioners and load-limiters	●	●	●	●	●	●
Side impact door beams	●	●	●	●	●	●
Smart Brake Support (SBS) [†]	●	●	●	●	●	●
Smart City Brake Support [Forward/Reverse] (SCBS F/R) [†]	●	●	●	●	●	●
Traction Control System (TCS) [†]	●	●	●	●	●	●
Trailer Stability Assist (TSA) [†]	●	●	●	●	●	●
Traffic Sign Recognition (TSR) [†]	●	●	●	●	●	●
‘Triple H’ safety construction with front and rear crumple zones	●	●	●	●	●	●
Tyre Pressure Monitoring System (TPMS) [†]	●	●	●	●	●	●
Whiplash-minimising front seats	●	●	●	●	●	●

● = Standard, — = Not available.

[†] Driver assist technology only and should not be used in place of skilled and safe driving practices. It is the driver’s sole responsibility to monitor vehicle surroundings and conditions and comply with all applicable laws at all times.

SPECIFICATIONS

Seats		Sport	Touring	GT	GT SP	Azami	Azami LE
Front seats with:	2-position memory function (driver)	—	—	●	●	●	●
	6-way power adjustment (passenger)	—	●	●	●	●	●
	8-way power adjustment (driver)	—	●	—	—	—	—
	10-way power adjustment (driver)	—	—	●	●	●	●
	Adjustable head restraints	●	●	●	●	●	●
	Heating function	—	●	●	●	●	●
	Height adjustment	●	●	●	●	●	●
	Lumbar support adjustment (driver)	—	●	●	●	●	●
	Rake and slide adjustment	●	●	●	●	●	●
	Seat back pockets	●	●	●	●	●	●
	Ventilation function	—	—	—	—	●	●
Rear seats with:	60/40 split fold backrest (2nd row)	●	●	●	●	●	—
	50/50 split fold backrest (3rd row)	●	●	●	●	●	●
	Adjustable head restraints	●	●	●	●	●	●
	Captain’s Seats (2nd row)	—	—	—	—	—	●
	Centre console with USB and storage (2nd row)	—	—	—	—	—	●
	Centre fold down armrest (2nd row)	●	—	—	—	—	—
	Centre fold down armrest with USB and storage (2nd row)	—	●	●	●	●	—
	Heating function (2nd row, outer)	—	—	●	●	●	●
	Power adjustment and walk in (2nd row)	—	—	—	—	—	●
	Rake and slide adjustment (2nd row)	●	●	●	●	●	—
	Ventilation function (2nd row)	—	—	—	—	—	●
Seat trim:	Black cloth	●	—	—	—	—	—
	Black leather [#]	—	●	●	—	—	—
	Natural stone leather [#]	—	—	○	—	—	—
	Burgundy leather [#]	—	—	—	●	—	—
	Walnut brown nappa leather [#]	—	—	—	—	●	●
	Pure White nappa leather [#]	—	—	—	—	○	○

● = Standard, ○ = Option, — = Not available.

[#] Leather interior includes some Maztex material on selected high impact surfaces.

5
YEAR | UNLIMITED
KILOMETRE
WARRANTY

5
YEAR | PREMIUM
ROADSIDE
ASSISTANCE



REST ASSURED — YOUR WARRANTY

The quality built into Mazda CX-9 is backed up by a 5 year, unlimited kilometre factory warranty and 6 year panel protection warranty.[#]

HELP IS AT HAND — MAZDA ROADSIDE ASSISTANCE

Mazda Premium Roadside Assistance is now included with the purchase of all new Mazda vehicles. Whether it's a flat battery, locked-in keys, accident support and flat or damaged tyres, we've got you covered, day or night, city or country. With Mazda Premium Roadside Assistance, help is always there when you need it. (Terms and conditions apply.)

MAZDA FINANCE — FINANCE, YOUR WAY

Mazda Finance offers flexible finance options to suit you or your business. You can choose from a Mazda Finance Fixed Rate Car Loan or Mazda Assured*, a loan option that enables you to enjoy a new Mazda more often. Each finance option comes with the reassurance of a Mazda Tailored Rate – an interest rate tailored to your individual circumstances.

MAINTAIN THAT ZOOM-ZOOM

Your Mazda CX-9 deserves the best in care. Servicing with Mazda Service Select gives your car the advantage of factory trained Service Technicians and advanced computer diagnostic systems. As well as maintaining your Mazda in A1 condition, you'll also be protecting your vehicle's outstanding resale value.

*Terms, conditions, fees and charges apply. Mazda Assured Guaranteed Future Value products are available to approved customers of Mazda Finance, a division of Australian Alliance Automotive Finance Pty Limited ABN 63 002 407 703, Australian Credit Licence 513747. At participating dealerships only. [#]New 5 year unlimited kilometre warranty available on all brand new vehicles purchased from 1 August 2018. For full terms and conditions please visit <https://www.mazda.com.au/owners/warranty/>



For further information, visit mazda.com.au
or Freecall 1800 034 411

All care is taken to ensure the accuracy of this brochure and availability of vehicles and features at the time of publication, however, to the extent permitted by law, Mazda Australia Pty Ltd will not be liable for any loss suffered or incurred by a purchaser or prospective purchaser if the content is inaccurate or not up to date, or if it withdraws any vehicles or features referred to in the brochure from the market. Specifications, features and model availability may vary from state to state and may change without notice. Please refer to mazda.com.au or consult your Mazda Dealer prior to placing an order to ascertain current information on model availability, specifications, options, features and prices. Mazda Australia Pty Ltd ABN 78 004 690 804. 211A Wellington Road, Mulgrave, Victoria 3170. iPod is a trademark of Apple Inc., registered in the US and other countries. Published July 2022. MAZ15077