



GENESIS

## 2018 GENESIS G90



# WHEN LUXURY PLAYS BY A NEW SET OF RULES, GOOD THINGS HAPPEN.

Most luxury automotive brands share the view that luxury is all about status – an excessive price tag just to claim exclusivity.

What sets Genesis apart is the belief that traditional ideas are changing. Time and convenience are now the ultimate luxuries. The luxury car, and the luxury car ownership experience, must evolve.

From the way it looks, to the way it drives – to the way it fits into your life – the Genesis G90 reflects a new definition of design, performance and innovation.

Welcome to the 2018 Genesis G90



# DESIGN THAT SHAPES THE WAY YOU MOVE.

When Genesis designers set out to make the G90 an expression of a new kind of luxury, they imagined this: The moment when an archer draws back the bow...and prepares to unleash the perfectly balanced tension that propels an arrow toward its target.

In that moment, there's a sense of athletic elegance. With its long hood and ultra-low aerodynamic profile (a mere 0.27 Cd), those same dynamic forces are under the G90's surface, ready to be released. It's as if the G90 is energized, even when standing still.

There's science behind this graceful, muscular shape. Every millimeter of the G90's body has been sculpted in wind tunnels to serve the aims of aerodynamics. Airflow has been precisely channeled to create one of the quietest cabins in the automotive world, while also creating downforce over the drive wheels for added stability at freeway speeds.

Power is offered in two forms. The first is a 3.3L GDI twin-turbo V6 engine with 365 horsepower and 376 lb-ft of torque. Peak torque is available from just 1,300 rpm for pressed-into-your-seat acceleration. The second is a 5.0L GDI V8 that delivers a smooth 420 horsepower and robust 383 lb-ft of torque.<sup>1</sup> Both engines harmonize with an advanced 8-speed SHIFTRONIC® automatic transmission that delivers seamless performance.





“Open the taps on (the) 420-hp Tau V-8, and the G90 leans back and smoothly builds speed, the muffled ripple emanating from beyond the dashboard interrupted only by the eight-speed automatic’s buttery shifts.”

— *Car and Driver*, October 2016



## PERFORMANCE TUNED TO YOUR PREFERENCE.

Race cars are calibrated to the precise demands of their drivers. Shouldn't a luxury performance sedan feel that way, too? In the Genesis G90, it does.

Intelligent Drive Mode with Smart Shift comes standard. Select how you want your G90 to respond from four driving modes: Eco, Smart, Sport or a driver-customizable Individual setting. Smart Shift is a proprietary Genesis innovation that uses artificial intelligence to optimize the driving mode you've selected to your actual driving style. In real time, your G90's engine, transmission, suspension, Electronic Stability Control and available All Wheel Drive adapt to create a precisely personalized driving experience.

The advanced dual-mode HTRAC All Wheel Drive gives you the ideal balance of rear wheel drive bias when road conditions are good, but instantly transfers power to whatever wheels need traction when surface conditions become slippery. The Genesis Adaptive Control Suspension goes even further to preserve handling control without sacrificing ride comfort.

In their 2017 review, the experts at *Motor Trend* summed up the G90's driving character as "Impressive, especially after driving others in the competitive set."<sup>2</sup> Noting its engine, suspension, body control and overall quietness, they found "the G90 has this creamy luxuriousness to it...rich and smooth." Now isn't that how a luxury performance sedan should feel?





## SAFETY GUIDES YOUR EVERY MOVE.

Think about the kind of driving you do every day. From the moment you pull out of your driveway, navigate pedestrian-heavy intersections and move in and out of freeway lanes, there's no shortage of potential hazards that demand you remain on high alert.

Thankfully, in your Genesis G90, you're never alone on that journey. In fact, you're accompanied by the most comprehensive set of standard safety and convenience features in the premium luxury class. The 2018 G90 is engineered with Genesis Smart Sense,<sup>®</sup> a suite of technical innovations that cover the full spectrum of safety from driver alertness and focus to total occupant safety – even the safety of other drivers around you.

Genesis Smart Sense includes Automatic Emergency Braking with Pedestrian Detection,<sup>3</sup> Smart Cruise Control,<sup>4</sup> Smart Blind Spot Detection,<sup>5</sup> Lane Keep Assist,<sup>6</sup> Driver Attention Alert and more. Much more. Incorporating all of these advanced safety technologies helped the 2017 Genesis G90 earn an IIHS Top Safety Pick+ rating.<sup>7</sup>

True safety is about more than how many airbags a vehicle has, or how well it maintains its integrity in a collision. It's about helping you avoid these incidents in the first place.



IT'S NOT TECHNOLOGY FOR THE SAKE OF TECHNOLOGY.



IT'S TECHNOLOGY FOR THE SAKE OF YOU.

#### YOUR ATTENTION, PLEASED

Imagine if your car could analyze your driving and help detect patterns typically associated with driver fatigue. The G90 can. Its Driver Attention Alert technology monitors signals such as steering angle, steering torque and your car's position within its traffic lane. If it determines the driver's inputs are symptomatic of recklessness or fatigue, it sounds an audible signal alert and displays a pop-up message on the multi-information display.



#### ENLIGHTENED APPROACH

For 2018, the G90 now comes with full LED headlights that enhance both the driver's ability to see the road, and the ability of other drivers to see your G90. To help improve your vision in nighttime corners, a technology called Dynamic Bending Light turns your headlight beams in concert with the steering angle. And to make switching from high to low beams effortless, the G90 employs automatic High Beam Assist.



#### A WIDER PERSPECTIVE

To help you park and maneuver through tight spaces, a Multi-view Camera offers a 360-degree view of the area around your car on the navigation screen. You can toggle between the vantage points of a forward-view cornering camera, two side mirror cameras and a rearview camera. Front and rear parking sensors provide audible and visual alerts when your G90 is getting close to obstructions, and a wide-angle image is displayed on the navigation screen at low parking speeds.







“The G90’s stately cabin is a model of sound suppression.”

— *Car and Driver*, August 2016

## YOUR SEAT IS YOUR SANCTUARY.

Settle into the G90, and your seat feels gentle, yet firm. To create these exceptionally comfortable seats, Genesis designers studied the sumptuous cabins of private jets and revolutionary Stressless® armchairs and recliners of renowned Norwegian furniture manufacturer Ekorner.® Both the driver and right-rear seat’s extensive adjustment features have earned certification from Aktion Gesunder Rücken, an international organization that tests and rates how well products support overall back comfort, health and safety.

The front seats offer soothing heat or ventilated cooling at the touch of a button. Your seating comfort can be precisely tailored thanks to a 22-way power driver seat and 16-way power passenger seat, along with an available 12-way power left-rear seat and 14-way power right-rear seat with fully reclining one-touch relax mode. No matter where you sit, you’re surrounded by evidence of Genesis craftsmanship – from nappa leather on the dash and seating surfaces to beautifully finished genuine wood trim throughout the cabin.

The G90’s spacious interior is also one of the quietest environments in the automotive world. Double soundproof glass and a remarkably rigid, highly insulated body structure provide this exceptional level of solitude. To enhance the ambiance, you can illuminate the cabin with one of seven different ambient lighting colors. And your cabin air is filtered by a 3-zone automatic temperature control system (complete with smart ventilation that maintains air quality) and a segment-first CO<sub>2</sub> sensor that helps keep you comfortable and alert.





## INNOVATION FORGED FROM INTUITION.

With all of the innovation now onboard luxury cars, the criteria that sets them apart is simply this: How easy is it to use? After road testing the G90, *Car and Driver* concluded there's a "mesmerizing number of buttons on the dashboard, but all are within easy reach and impart a sense of accessibility to the G90's myriad controls and features."<sup>8</sup>

The G90 lets you operate its systems any way you choose – using voice commands, a Driver Information System Multimedia Controller or fingertip steering wheel controls. All of which makes it easier than ever to activate the G90's audio and media systems, turn-by-turn navigation, climate controls, Bluetooth® and phone functions.

Split-screen or expanded view modes let you decide how you want your 12.3" high-definition center display presented. Want vital information like vehicle speed, speed limits, Smart Cruise Control distance and Blind Spot Detection alerts available at a glance? The G90's full-color Heads-up Display projects it directly onto the windshield.

Even when you're outside your G90, ease of use is front and center thanks to your Genesis smartphone app. It acts like your own personal concierge, anticipating your needs by combining Genesis Connected Services features with data from your G90, your smartphone and the internet. The app proactively notifies you of important information like estimated departure times to avoid being late for meetings, weather or traffic alerts, and more. It also lets you do all kinds of things remotely, from locking or unlocking your car to warming or cooling the interior – all while sitting comfortably inside of your office or home.



## GENESIS CONNECTED SERVICES

Our innovative connected car technology has earned industry accolades by combining safety, car care, infotainment and remote functionality into a complete package that's easy to use and complimentary for the first three years of ownership.<sup>9</sup>

### REMOTE FEATURES

- Remote Lock/Unlock
- Remote Start with Climate Control
- Car Finder
- Stolen Vehicle Slowdown/Recovery
- Vehicle Immobilization
- Vehicle Safeguard Alerts
- Alarm Alerts

### GUIDANCE FEATURES

- Destination Search Powered by Google™
- Destination Send-to-Car by Google™

### CONNECTED CARE FEATURES

- SOS Emergency Assistance
- Automatic Collision Notification
- Monthly Vehicle Health Reports
- Maintenance Reminders
- On-Demand Diagnostics
- Enhanced Roadside Assistance
- Service Link
- Genesis Intelligent Assistant App

## CUT THE CORD

No more tangled wires: Charging your compatible smartphone has now become as simple as placing it on the Genesis G90's Qi standard charging pad located in the center console. An indicator icon lets you know if your smartphone is connected to the charging pad, and it prompts you with an audible alert if you're about to leave your smartphone behind when exiting the vehicle.



## LET THE CONCERT BEGIN

The music you love will sound more amazing than ever on the G90's 17-speaker Lexicon® Premium Audio System with Quantum Logic® Surround Sound. Its Clari-Fi™ Music Restoration Technology enriches the sound qualities lost in today's compressed music file formats. With state-of-the-art speaker output articulation, it offers you a choice of two sonic perspectives – as if you're seated in the audience at a concert hall, or directly onstage.



## YOU'RE WELCOME

Walking up to your G90 with your hands full? Wait behind the hands-free smart trunk for a few seconds...and it opens automatically after detecting the Proximity Key in your pocket or purse. The same key also lets you unlock the car simply by gripping the door handle. Remotely unlock the car at night with your key fob, and you're welcomed by a pool of LED light that illuminates your path as the power-folding side mirrors swing out. Settle into your G90's supple nappa leather seats, and its smooth power door closure helps ease your entrance.





# EXPERIENCES THAT REWARD YOUR EXPECTATIONS.

Your family and friends are not just along for the ride, so your G90 should be a place where their experience is every bit as satisfying as the driver's. Settle into either of the Ultimate model's rear seats, press the power recline switch, turn on the soothing heat...and you'll know this is a luxury sedan crafted to restore rear passengers to their rightful place of honor.

A one-touch relax mode fully reclines the right-rear seat for first-class comfort, while dual 10.3" HD video monitors ensure the individualized entertainment of your rear-seat passengers. Raise the power rear-window and side-window sunshades, and your tranquility is complete.

That same sense of profound comfort is behind everything Genesis does. We've made the purchase process simple and straightforward. We've also created a new level of customer care designed to save you time whenever your G90 needs servicing at your Genesis dealer. We'll come pick up your car for its tune-up or oil change, deliver a courtesy replacement vehicle to you, and return your G90 when it's ready. And when scheduled maintenance is required, it's complimentary for the first 3 years or 36,000 miles. All of which ensures your Genesis ownership experience is as smooth as the G90 driving experience itself.

THE GENESIS EXPERIENCE	
COMPLIMENTARY SCHEDULED MAINTENANCE	COMPLIMENTARY SERVICE VALET
3 YEARS / 36,000 MILES	3 YEARS / 36,000 MILES
SIRIUSXM® TRAFFIC & TRAVEL LINK®	GENESIS CONNECTED SERVICES
3 YEARS COMPLIMENTARY <small>NOT AVAILABLE IN AK &amp; HI</small>	3 YEARS COMPLIMENTARY <small>INCLUDES REMOTE START (ENROLLMENT REQ.)</small>
24/7 ENHANCED ROADSIDE ASSISTANCE	MULTIMEDIA & NAVIGATION UPDATES
3 YEARS / UNLIMITED MILES	3 YEARS COMPLIMENTARY

REFER TO FOOTNOTES ON THE BACK PAGE FOR ADDITIONAL PROGRAM DETAILS





2018 GENESIS G90 3.3T PREMIUM

KEY STANDARD FEATURES

PERFORMANCE

365 hp/376 lb-ft, 3.3L GDI twin-turbo V6 engine with Dual Continuously Variable Valve Timing
8-speed automatic transmission with SHIFTRONIC® and paddle shifters
Shift-by-Wire
Intelligent Drive Mode with Smart Shift
Electric Power Steering with Variable Gear Ratio
Genesis Adaptive Control Suspension with Electronic Damping Control
19" chrome alloy wheels with P245/45R19 (front) and P275/40R19 (rear) tires
Dual asymmetrical exhaust tips integrated with rear bumper

COMFORT

3-zone automatic temperature control with Air Quality System and CO <sub>2</sub> sensor
Proximity Key entry with push button start
Leather-wrapped dashboard and genuine wood interior trim
Nappa leather seating surfaces and microfiber suede headliner
Heated and ventilated front seats
22-way power driver seat including lumbar, shoulder and side-bolster adjustment
16-way power front passenger seat including lumbar adjustment
Integrated Memory System for front seats, side mirrors and steering column
Heated leather-wrapped steering wheel with power tilt-and-telescopic function
Heated rear seats
Power windows with auto-down/up
Ambient LED interior lighting (adjustable – 7 colors)
Auto-dimming inside rearview mirror with compass and HomeLink®
Power rear window sunshade
Power rear side-window sunshades
Acoustic-laminated soundproof windshield, side and rear windows
Power door closure
Power trunk lid
Hands-free smart trunk with auto open
Power tilt-and-slide sunroof
Genesis logo approach lights
Premium-grade floor mats, cargo mat and first aid kit

TECHNOLOGY

Multi-view Camera
Wireless device charging pad (Qi standard)
Forward-view cornering camera
Full color Heads-up Display
Electroluminescent Gauge Cluster with 7" HD color LCD multi-info display
12.3" HD navigation system with Multimedia Controller
Complimentary annual navigation updates for 3 years
SiriusXM® Traffic and Travel Link® data services (3-year complimentary subscription)
Lexicon® AM/FM/HD Radio®/CD/DVD premium audio system with 17-speaker Quantum Logic® Surround Sound and Clari-Fi™ Music Restoration Technology
SiriusXM® Satellite Radio and shark-fin antenna (90-day complimentary subscription)
Genesis Connected Services (3-year complimentary subscription)
Front (data/charge) and rear (charge only) USB ports
Bluetooth® hands-free phone system
MP3 auxiliary input jack

SAFETY

Lane Keep Assist
Driver Attention Alert
Vehicle Stability Management
Smart Cruise Control with stop/start
Pre-collision warning and Automatic Emergency Braking with Pedestrian Detection
Smart Blind Spot Detection with Lane Change Assist and Rear Cross-traffic Alert
9 airbags: Advanced dual front airbags, front and rear seat-mounted side airbags, driver's knee airbag and roof-mounted side-curtain airbags
Electronic Stability Control with Traction Control System
4-wheel disc brakes with ABS, Brake Assist and Electronic Brake-force Distribution
Electronic Parking Brake with Automatic Vehicle Hold
Anti-whiplash, power-adjustable front seat head restraints with seatbelt pretensioners
Tire Pressure Monitoring System with individual tire pressure indicators
Full LED headlights with LED accents and Dynamic Bending Light
LED Daytime Running Lights
Automatic headlights with High Beam Assist
Front and rear parking sensors with rearview camera
Dual power-folding heated auto-dimming side mirrors with LED turn signal indicators
Windshield wiper de-icer, rain-sensing wipers and auto-defogging windshield
Haptic steering wheel


DIMENSIONS

INTERIOR DIMENSIONS	
Head Room, front (with sunroof)/rear	41.1 / 38.0 in
Leg Room, front/rear	46.3 / 37.8 in
Shoulder Room, front/rear	59.1 / 57.9 in
Hip Room, front/rear	56.5 / 55.0 in
Total Interior Volume	128.9 cu ft
Passenger Volume	113.2 cu ft
Cargo Volume, trunk	15.7 cu ft

EXTERIOR DIMENSIONS	
Wheelbase	124.4 in
Length	204.9 in
Width, excluding mirrors	75.4 in
Height	58.9 in
Coefficient of Drag	0.27 Cd

EPA MILEAGE ESTIMATES

City/Highway/Combined (3.3L RWD)	17 / 24 / 20 MPG
City/Highway/Combined (3.3L AWD)	17 / 24 / 20 MPG
Fuel Tank Capacity	21.9 gal



An Advanced Dual Mode HTRAC All Wheel Drive system is available for both Genesis G90 3.3T Premium and Genesis G90 5.0 Ultimate models.

2018 GENESIS G90 5.0 ULTIMATE

KEY STANDARD FEATURES

PERFORMANCE

420 hp/383 lb-ft, 5.0L GDI V8 engine with Dual Continuously Variable Valve Timing
8-speed automatic transmission with SHIFTRONIC® and paddle shifters
Shift-by-Wire
Intelligent Drive Mode with Smart Shift
Electric Power Steering with Variable Gear Ratio
Genesis Adaptive Control Suspension with Electronic Damping Control
19" chrome alloy wheels with P245/45R19 (front) and P275/40R19 (rear) tires
Dual asymmetrical exhaust tips integrated with rear bumper

COMFORT

3-zone automatic temperature control with Air Quality System and CO <sub>2</sub> sensor
Proximity Key entry with push button start
Leather-wrapped dash and genuine wood interior trim
Nappa leather seating surfaces and microfiber suede headliner
Heated and ventilated front and rear seats
22-way power driver seat including lumbar, shoulder and side-bolster adjustment
16-way power front passenger seat including lumbar adjustment
Integrated Memory System for front seats, side mirrors and steering column
Heated leather-wrapped steering wheel with power tilt-and-telescopic function
14-way power right-rear seat and 12-way power left-rear seat
Integrated Memory System for rear outboard seats
Power windows with auto-down/up
Ambient LED interior lighting (adjustable – 7 colors)
Auto-dimming inside rearview mirror with compass and HomeLink®
Power rear window sunshade
Power rear side-window sunshades
Acoustic-laminated soundproof windshield, side and rear windows
Power door closure
Power trunk lid
Hands-free smart trunk with auto open
Power tilt-and-slide sunroof
Rear seat illuminated vanity mirrors
Genesis logo approach lights
Premium-grade floor mats, cargo mat and first aid kit

TECHNOLOGY

Multi-view Camera
Wireless device charging pad (Qi standard)
Forward-view cornering camera
Full color Heads-up Display
Electroluminescent Gauge Cluster with 7" HD color LCD multi-info display
12.3" HD navigation system with Multimedia Controller
Complimentary annual navigation updates for 3 years
SiriusXM® Traffic and Travel Link® data services (3-year complimentary subscription)
Lexicon® AM/FM/HD Radio®/CD/DVD premium audio system with 17-speaker Quantum Logic® Surround Sound and Clari-Fi™ Music Restoration Technology
SiriusXM® Satellite Radio and shark-fin antenna (90-day complimentary subscription)
Genesis Connected Services (3-year complimentary subscription)
Rear seat entertainment system with dual 10.3" HD monitors
Front (data/charge) and rear (charge only) USB ports
Bluetooth® hands-free phone system
MP3 auxiliary input jack

SAFETY

Lane Keep Assist
Driver Attention Alert
Vehicle Stability Management
Smart Cruise Control with stop/start
Pre-collision warning and Automatic Emergency Braking with Pedestrian Detection
Smart Blind Spot Detection with Lane Change Assist and Rear Cross-traffic Alert
9 airbags: Advanced dual front airbags, front and rear seat-mounted side airbags, driver's knee airbag and roof-mounted side-curtain airbags
Electronic Stability Control with Traction Control System
4-wheel disc brakes with ABS, Brake Assist and Electronic Brake-force Distribution
Electronic Parking Brake with Automatic Vehicle Hold
Anti-whiplash, power-adjustable front seat head restraints with seatbelt pretensioners
Rear seat power-adjustable head restraints
Tire Pressure Monitoring System with individual tire pressure indicators
Full LED headlights with LED accents and Dynamic Bending Light
LED Daytime Running Lights
Automatic headlights with High Beam Assist
Front and rear parking sensors with rearview camera
Dual power-folding heated auto-dimming side mirrors with LED turn signal indicators
Windshield wiper de-icer, rain-sensing wipers with auto-defogging windshield
Haptic steering wheel

DIMENSIONS

INTERIOR DIMENSIONS	
Head Room, front (with sunroof)/rear	41.1 / 38.0 in
Leg Room, front/rear	46.3 / 37.8 in
Shoulder Room, front/rear	59.1 / 57.9 in
Hip Room, front/rear	56.5 / 55.0 in
Total Interior Volume	128.9 cu ft
Passenger Volume	113.2 cu ft
Cargo Volume, trunk	15.7 cu ft

EXTERIOR DIMENSIONS	
Wheelbase	124.4 in
Length	204.9 in
Width, excluding mirrors	75.4 in
Height	58.9 in
Coefficient of Drag	0.27 Cd

EPA MILEAGE ESTIMATES

City/Highway/Combined (5.0L RWD)	16 / 24 / 19 MPG
City/Highway/Combined (5.0L AWD)	15 / 23 / 18 MPG
Fuel Tank Capacity	21.9 gal

READY TO KEEP ROLLING?

Visit [genesis.com](https://www.genesis.com) and explore the services and benefits that make the ownership of a Genesis luxury automobile an unparalleled experience. You'll find shopping tools that help you take the next steps, from a build-and-price configurator to more photos, technical specs and a locator for finding an authorized dealer nearest you.



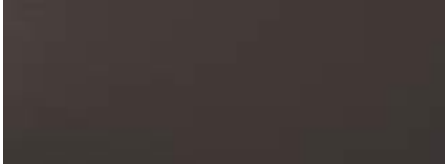
EXTERIOR COLORS



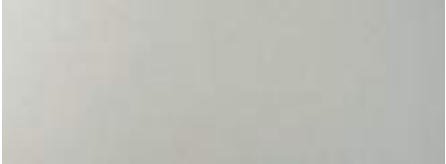
Casablanca White



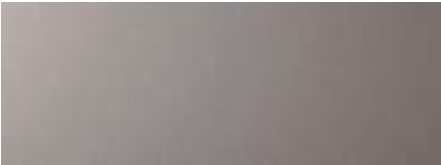
Victoria Black



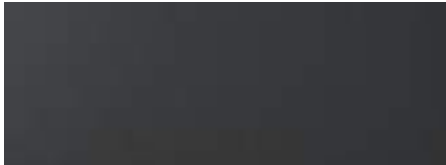
Serengeti Brown



Santiago Silver



San Simeon Gray



Himalayan Gray



Adriatic Blue

INTERIOR COLORS

Black (Walnut)



Beige (Gray Ash)



WOOD TRIMS

Gray Ash



Walnut



FOOTNOTES

<sup>1</sup>Horsepower rating is based on premium fuel. <sup>2</sup>*Motor Trend*, November 2016. <sup>3</sup>Automatic Emergency Braking (AEB) with Pedestrian Detection detects pedestrians, but not in all conditions. AEB is designed to assist drivers to avoid, or reduce the severity of, collisions with cars that have slowed or stopped in front of them. AEB is a supplemental assist and does not replace the need for extreme care and attention by the driver. Automatic Emergency Braking may not stop the vehicle completely and will not avoid all collisions. <sup>4</sup>Smart Cruise Control (SCC) is not a collision avoidance or a warning device. SCC is for highway use only and should not be used in poor weather, heavy or varying traffic, or on winding or slippery roads. Driver remains responsible to slow or stop the vehicle to avoid a collision. <sup>5</sup>Do not rely completely on Blind Spot Detection (BSD) and be sure to use proper lane changing procedures. BSD may not detect every object or vehicle and will not prevent accidents. See Owner's Manual for details and limitations. Never rely exclusively on the Rear Cross-traffic Alert. Always look over your shoulder and use your mirrors to confirm rear clearance. There are limitations to the function, detection, range and clarity of the system. The vehicle must be in reverse gear at a speed of 6 mph or less. Lane Change Assist provides an audible and visual alert if the turn signal is activated and a vehicle in your intended lane is sensed to be closing at a rate of speed that makes changing lanes unsafe. There are limitations to the function, range, detection and clarity of the system. <sup>6</sup>Lane Keep Assist detects lane markers and applies slight corrective steering measures to help assist your vehicle from drifting out of its driving lane. Lane Keep Assist is not a substitute for safe driving practices, but is a supplemental assist only. The driver is responsible for always maintaining command and control of the vehicle and must keep hands on the wheel at all times. Drivers should read their Owner's Manual thoroughly before using Lane Keep Assist. <sup>7</sup>2017 IIHS 'Top Safety Pick+' based on good ratings in the moderate overlap front, small overlap front, side, roof strength, and head restraint tests, no less than an advanced rating for front crash prevention, and no less than an acceptable headlight rating. For details, visit [iihs.org](http://iihs.org). The Government 5-Star Safety Ratings are part of

the National Highway Traffic Safety Administration's (NHTSA's) New Car Assessment Program. Visit [safercar.gov](http://safercar.gov) for details. <sup>8</sup>*Car and Driver*, 2017 Genesis G90 3.3T AWD, October 2016. <sup>9</sup>Active Genesis Connected Services subscription required. Only use Genesis Connected Services and corresponding devices when it is safe to do so. Cellular and GPS coverage is required. Features, specifications, and fees vary by subscription plan and are subject to change. For more on details and limitations, visit [genesis.com](http://genesis.com) or an authorized retailer of Genesis branded products.

Genesis Experience Notes: **Genesis Service Valet** is for 2017 and 2018 model years vehicles for maintenance and warranty repairs for 3 years/36,000 miles. Mileage and ownership limitations may apply. See your retailer for details. Genesis reserves the right to change program without notice. Exclusions may apply. **Genesis Complimentary Maintenance** is for 2017 and 2018 model year vehicles for factory recommended scheduled maintenance for 3 years/36,000 miles. Ownership limitations may apply. See your retailer for details. Genesis reserves the right to change program without notice. Exclusions may apply. **Multimedia and Navigation Map Care updates** are available annually for 2017 and 2018 model year vehicles for 3 years after purchase with a regularly scheduled maintenance appointment. Availability timing may vary. Ownership limitations may apply. See your retailer for details. Genesis reserves the right to change program without notice. Exclusions may apply. **Genesis Connected Services/Blue Link** is available for 3 years complimentary for 2017 and 2018 model year vehicles. Enrollment is required. Ownership limitations may apply. See your retailer for details. Genesis reserves the right to change program without notice. Exclusions may apply. **SiriusXM® Traffic and Travel Link** is available for 3 years complimentary for 2017 and 2018 model year vehicles. This does not include SiriusXM® audio. SiriusXM® audio trial is 90 days. Ownership limitations may apply. See your retailer for details. Genesis reserves the right to change program without notice. Exclusions may apply. **Roadside Assistance** is complimentary for 3 years/unlimited miles for 2017 and 2018 model year vehicles. Mileage and ownership limitations may apply. See your retailer for details. Genesis reserves the right to change program without notice. Exclusions may apply.

GENESIS BRAND WARRANTY

POWERTRAIN LIMITED WARRANTY	NEW VEHICLE LIMITED WARRANTY	ANTI-PERFORATION WARRANTY
10 YEARS / 100,000 MILES	5 YEARS / 60,000 MILES	7 YEARS / UNLIMITED MILES

See dealer for LIMITED WARRANTY details. Fuel economy estimated by EPA for comparison only. Mileage may vary. While the information contained in this brochure was correct at the time of printing, specifications and equipment can change. Feature comparisons based on competitor information available at the time of printing. No warranty or guarantee is being extended in this brochure, and Hyundai Motor America reserves the right to change product specifications and equipment at any time without incurring obligations. Some vehicles are shown with optional equipment. Specifications apply to U.S. vehicles only. Please contact your retailer of Genesis branded products for current vehicle specifications. As part of our commitment to a responsible environment, this brochure is printed using paper certified by the Forest Stewardship Council.® FSC® certification helps ensure that the highest social and environmental standards are met in the making of the paper we use, contributing to conservation, responsible management, and community-level benefits for people near the forests. Visit [genesis.com](http://genesis.com) or our social media sites.







GENESIS